

With Inspec 3D CNC Measurement Software you can easily create programs for the PRICIS IM-Series to automatically measure your parts. Pack with powerful features to measure most complex parts yet user friendly.

Measurement Window Toolbox

Includes functional icons allows user to measure or construct basic features such as point, line, circle, arc, box, slot, plane, curve and complex 3D shape such as cylinder, cone and sphere with optional touch probe.



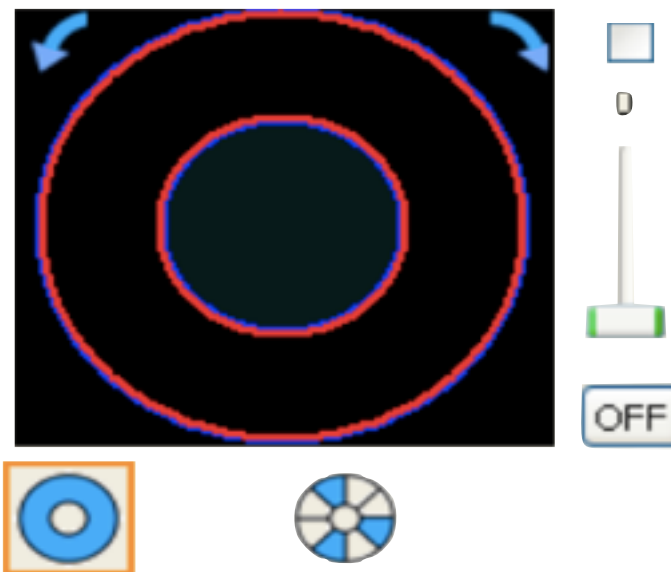
Touch Probe Options

Measuring features inaccessible by video such as the surface and sides of a features with wide range of optional stylus provides measurement.



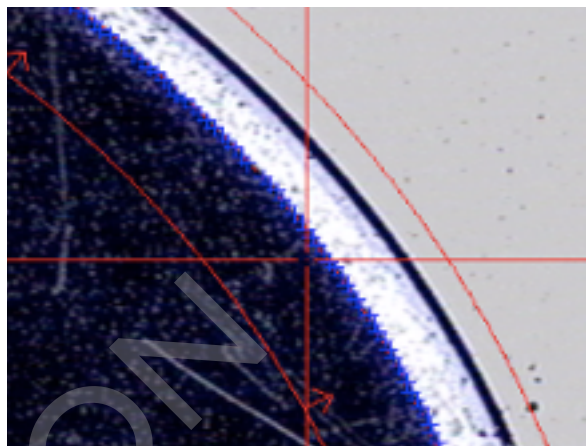
Programmable LED Illumination

Let you set levels and on/off status for all illumination. The programmable lighting automatically changes status when running a routine, either it is on/off, different brightness or partial sector ringlight.



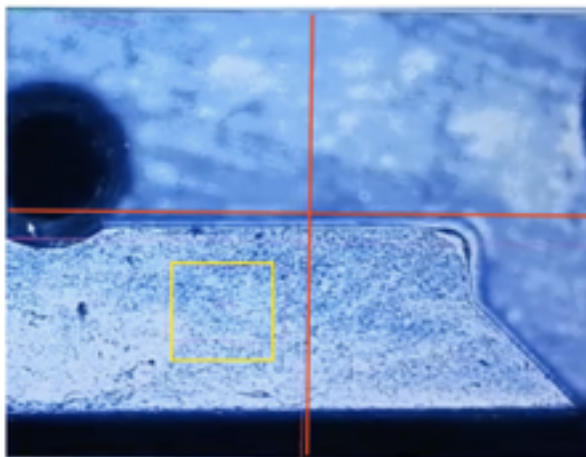
Edge Detection

Multiple weak edges can be measure with the directional search target and the contrast enhance by the partition ringlight illumination.



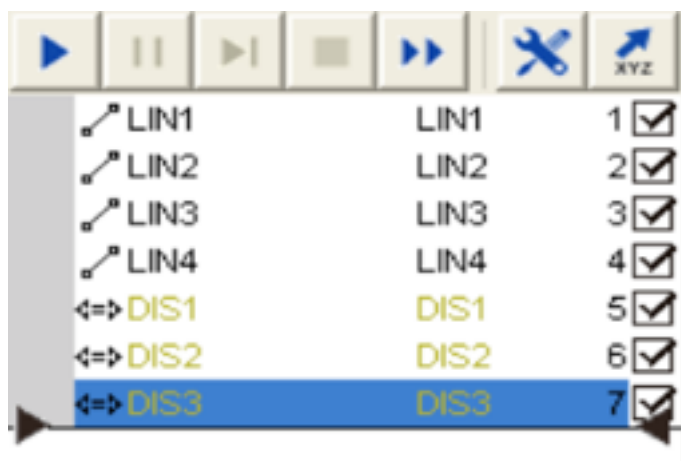
Focus Plane

Autofocus capture the surface and measure the height between two points or plane.



Save and Run program

Allows user to create a measurement program, save and run measurement program for part repeat measurement. Every steps will be recorded and can be edit. Reduce measurement time and minimize error.



SPC Data Analysis

Data can be collected and analysis automatically with the build-in statistical process control capability. A selection of chart and graph is available, such as Raw Data, XBar-R, XMed-R, XBar-S, X-Rm Chart, CP, CPK.



Data/Image Output

Measurement Data and graphical image can be export to pdf, words, excel and DXF format(if installed).

Motion Control

All three axis direction and speed are fully control by the a click of a mouse.



Model Window

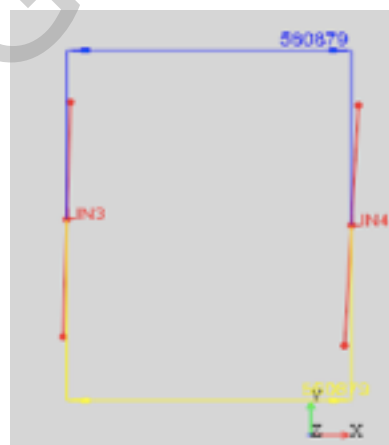
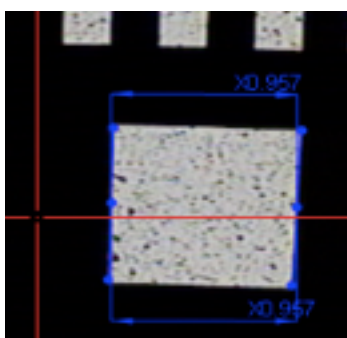


Image Window



Graphical model

Image Window and Model Window are tag with Dimensions and Label. Features color can be preset for user reference.