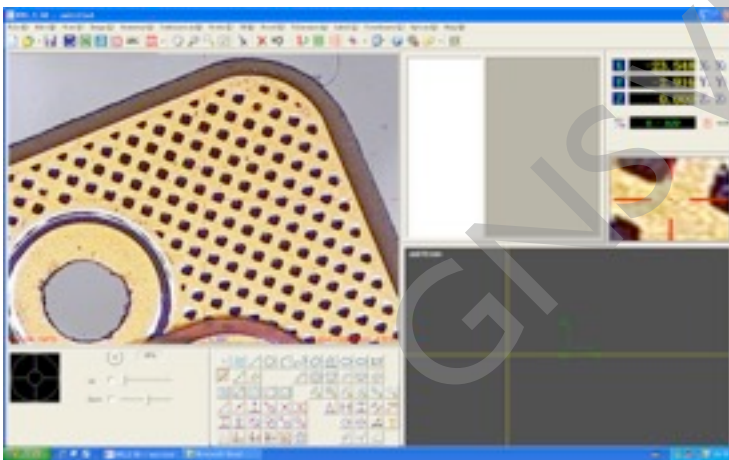


The PRICIS um-Lite series is an easy to use benchtop manual two dimensional measurement system. um-Lite's robust stage, zoom optics and color camera provide accuracy you expect in a benchtop measurement system.

Features & Benefits

- Rugged granite base & column structure provides stability.
- Granite stage with fixturing holes
- 1.0 micron scales on X and Y Axis.
- 0.7-4.5x optical Magnification.
- LED ringlight & backlight Illumination.
- Optional Z-height measurement function.
- Optional motorized Z-Axis.



Easy to use 2 Dimensional measurement software

Full color imaging with Image, Graphic, Result and Control windows makes it easy to measure parts easily. Capable of measuring dimensional measurement such as Length, Width, Height, Angle, Diameter, etc.

Optional Z-height measurement.

Manually focus the surface of two plane, the software will analyse and determine the Z height.



Optional motorized Z-Axis

With the motorized Z-Axis, the system can perform autofocus and Z Height measurement automatically.



Measuring Unit	PRICIS <i>um</i> -Lite210	PRICIS <i>um</i> -Lite320	PRICIS <i>um</i> -Lite430
XYZ Travel (mm)	200x100x150	300x200x200	400x300x200
Dimensions (mm)	600x600x800	700x700x900	900x800x900
Weight Approx. (kg)	120	150	250

XYZ Axis	Rolling Ring linear motion guide rail with positioning knobs and with free movement lever for X and Y Axis. Leadscrew linear guide rail with positioning knob for Z Axis. (Optional motorized Z Axis with autofocus function)
Worktable	Granite surface with fixturing holes, stage glass and 25kg load capacity.
Scale Resolution (XY)	1.0um (Optional Z Axis)
Camera	720 TVL, 1/3" format High Resolution Color CCD Camera
Optics	6.5:1, 0.7x-4.5x manual zoom lens (approx. 30-180X) on screen magnification on 19" LCD monitor). W/D 95mm, FOV: 7-1.1mm
Optional lens	0.5x, 0.75x, 1.5x, 2.0x
Optional Adapter tubes	0.67x, 2.0x
Illumination	Adjustable LED ringlight & backlight (Optional Auxiliary light)
Controller	PC with Windows Operating System
Software	EVS 2.5D Measurement Software. (Optional Inspec 3D CNC Metrology Software for motorized Z Axis)
Power	100-220 VAC, +/-5%, 50/60Hz, Single phase, 3A
Recommended Operating Environment	Temperature 20-25 degree Celcius +/-2 degree C/hr, Humidity 30-80% (non-condensing), vibration <0.002g below 15Hz
Measuring Accuracy	XY* E<=3.0+L/200um, Z* E<=5.0+L/100um (Optional motorized Z Axis).

*Where L - Length in mm with evenly distributed 5kg load in the standard measuring plane. Depending on load distribution, accuracy at maximum rated load may be less than standard accuracy. All optical accuracy specifications at maximum zoom lens setting. X/Y axis artifact: Standard linear glass scale. Z axis artifact Standard Gage Block.