

Pricis-VMG *Series*

CNC Large Travel
Video Measuring System



Above and Beyond

Pricis-VMG *Series*



Pricis VMG- 1 0 1 2

Pricis-VMG Series is a large travel high precision moving-bridge type three- axis dimensional measurement system with a stationary stage that can accomodate heavy and light weight workpiece, where workpiece does not move during measurement. Pricis-VMG450 comes standard with a zoom optics coupled with high resolution color camera for crystal clear imaging.

Pricis-VMG Series

Features & Benefits



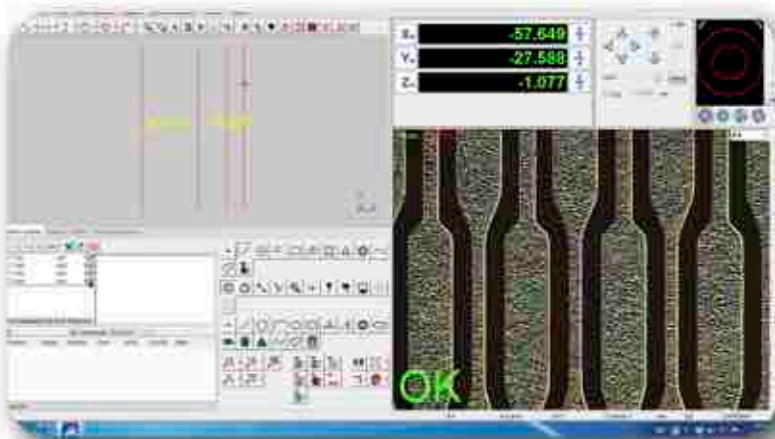
User friendly measurement software allows instant measurement result and programming for fast automatic measurement.

Programmable LED partition illumination enhance weak edges contrast and visibility



Multi functions joystick controller with speed control and EMO button

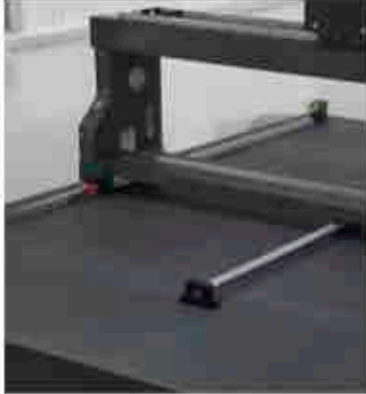
Optional touch trigger probes can measure workpiece features that cannot be inspected with vision. This capability is also useful for precise height measurements.



User friendly measurement software with powerful features. With Image, Graphic, Result and Control windows makes it easier for user to measure parts easily. Auto focus & edge detection, programmable automatic measurement.

Pricis-VMG *Series*

**GRANITE SKELETON
STRUCTURE**



**CENTERED DRIVE
BALL SCREW POWER
TRAIN**



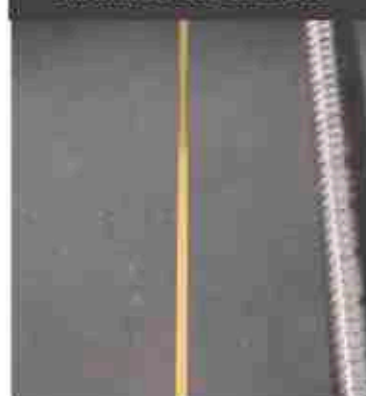
LINEAR GUIDE RAIL



**HIGH RESOLUTION
LINEAR ENCODER**



**HIGH RESOLUTION
LINEAR ENCODER**



OPTICAL ZOOM LENS



FEATURES & BENEFIT

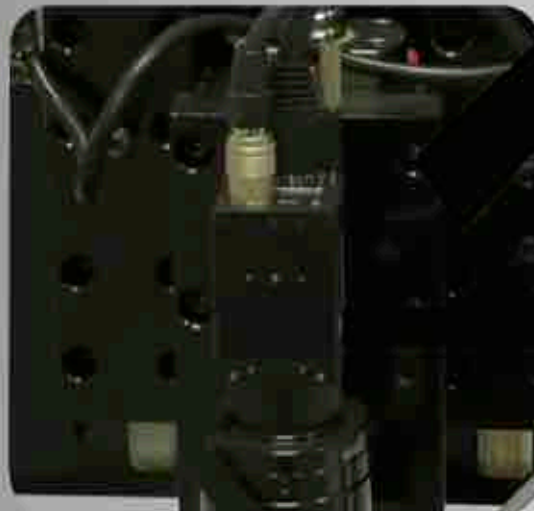
- Machine base plate, column and moving bridge structure are all built with high grade granite for its extreme strength and durability.
- Centered drive low friction Precision Ball screw yields high mechanical efficiency on all axis.
- Pricis-VMG Series uses Linear guide rail that can withstand high load capacity with low friction, excellent response and high precision.
- Pricis-IM Series motion control uses Panasonic Servo Driver and Servo Motor for XYZ Axis for better performance
- All XYZ Axis fitted with Nidec high resolution 0.2um Linear Encoder, providing high accuracy and reliable positioning control system.
- High resolution color camera couple with motorized zoom lens with high accuracy in zoom and repetitive positioning. Optical zoom range from 0.7x to 4.5x. The software allows user to program and change magnification easily. High hardness alloy material, for a long lifespan.

Pricis-VMG *Series*

MOTORIZED ZOOM LENS



MEGAPIXEL GIGE CAMERA



- Optional 6.5X motorized zoom lens with or without coaxial illumination at your choice.
- Magnification ratio 6.5:1 with a magnification range from 0.7x to 4.5x.
- Excellent performance, with high resolution, low distortion.
- Optional Megapixel GIGE High resolutions Color CCD Camera with superb crystal clear images.
- Joystick for all axis with speed control, emergency stop and indicator.
- Measuring features inaccessible by video such as the surface and sides of a features with wide range of optional stylus provides measurement.

MULTIFUNCTIONS JOYSTICK



TOUGH TRIGGER PROBE



Model	VMG4050	VMG5060	VMG6080
XYZ Travel (mm)	400x500x200	500x600x200	600x800x200
Model	VMG8010	VMG1012	VMG1215
XYZ Travel (mm)	800x1000x200	1000x1200x200	1200x1500x200
Model	VMG1518	VMG1520	VMG1525
XYZ Travel (mm)	1500x1800x200	1500x2000x200	1500x2500x200
XYZ Axis	Precision motorized moving bridge with 3 axis joystick control. Mounted on linear guide rail coupled with ball screw drive train.		
Worktable	Stationary glass bottom stage.		
Motor Drive	Panasonic servo motor drive on XYZ Axis.		
Scale Resolution (XYZ)	Nidec 0.2um linear encoder scale.		
Camera	850TVL, 1/3" High resolutions colour camera coupled to motorized zoomlens. Optional Megapixel GigE Camera.		
Optics	6.5:1, 0.7x-4.5x motorized zoom lens (approx. 30-180X) on screen magnification with 19" LCD monitor. W/D 95mm, FOV: 7-1.1mm.		
Optional lens	0.5x, 0.75x, 1.5x, 2.0x		
Optional Adapter tubes	0.67x, 2.0x		
Illumination	Programmable High Intensity LED backlight and partition ringlight. (Optional Coaxial Light)		
Controller	Lenovo PC & LCD Monitor with Windows Operating System		
Software	Ins-C Metrology Software.		
Optional Touch Trigger Probe	Renishaw touch trigger probe with choice of ruby ball styli		
Power	100-220 VAC, +/-5%, 50/60Hz, Single phase, 3A		
Recommended Operating Environment	Temperature 20-25 degree Celcius +/-2 degree C/hr, Humidity 30-80% (non-condensing), vibration <0.002g below 15Hz		
Measuring Accuracy	XY E<=3.0+L/200um, Z* E<=3.0+L/100um.(optional touch probe)		

*Where L - Length in mm with evenly distributed load in the standard measuring plane. Depending on load distribution and image contrast, accuracy may be less than standard accuracy. All optical accuracy specifications with standards artifact at maximum zoom lens setting.